



**A World of Wireless Applications**  
**SafeDispatch v5.0 Overview**



# Who We Are

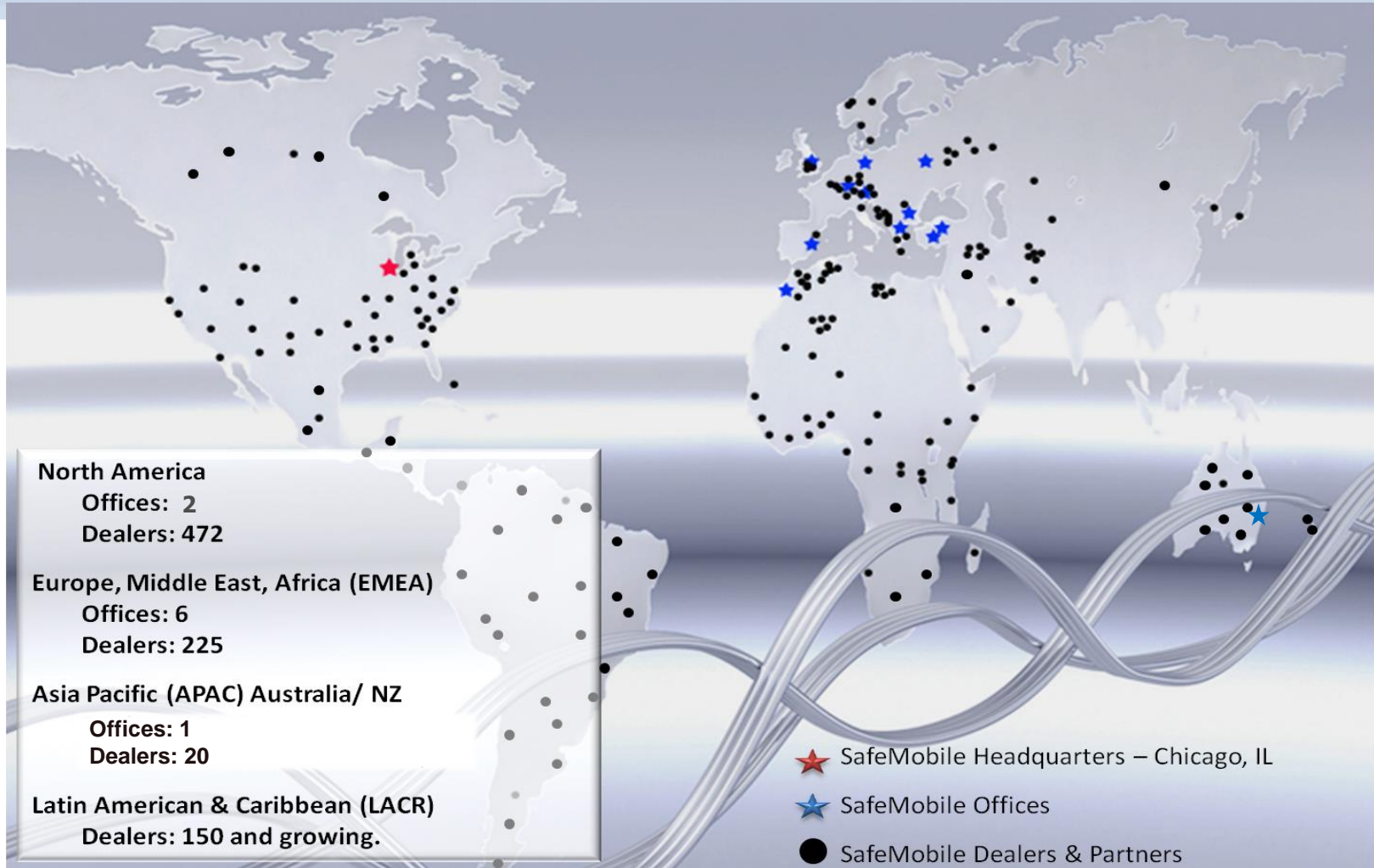
**SafeMobile, Inc. was founded in 2001 to deliver data and communication management solutions across the globe. We are headquartered in Rolling Meadows, Illinois, a suburb of Chicago.**

**SafeMobile is a premier Empower Circle partner of Motorola, specializing in data applications and system integration that provide professional communication solutions as well as mobility and IT applications for public safety, government, commercial, industrial and transport sectors.**





# Coverage – Worldwide



We provide and integrate Communication Solutions based on multiple platforms for communication, interoperability and infrastructure, including:

- Analog Conventional
- MPT1327
- Digital Mobile Radios -DMR
- TETRA
- APCO25
- GSM/GPRS
- CDMA
- HF
- Satellite



## We serve customers in the following vertical markets:

- Education
- Government (Fed-State)
- Healthcare
- Hospitality
- Manufacturing
- Petrochemical / Mining
- Public Safety / Admin
- Retail
- Transportation / Logistics
- Utilities
- Wholesale / Distribution



# Welcome to SafeDispatch





# SafeDispatch Configuration





## SafeDispatch System Compatibility

Solutions	DMR	TETRA	P25	HF	CELLULAR
SafeDispatch	✓	✓	ATL25 ✓	✓	✓
SafeDispatch Mobile	✓	✓	✓	✓	✓





# Modular Suites

	SafeDispatch	SafeDispatch Mobile App
Voice Dispatch	✓	✓
Call Recording	✓	✓
GPS/AVL Tracking	✓	✓
Historical Playback	✓	✓
Geo-fencing/ Landmarks	✓	✓
Data Transmission	✓	✓
E-Mail	✓	✓
Text Messaging	✓	✓
Event/ Alarm Logging	✓	✓
Enhanced Reporting	✓	✓

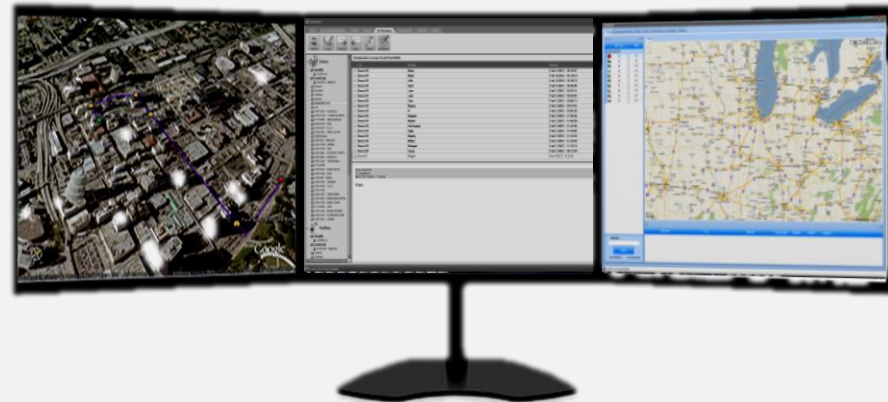


# Features

	SafeDispatch	SafeDispatch Mobile App
Client-Server	✓	✓
Modular Suites	✓	✓
Real-Time Access	✓	✓
Automatic Updates	✓	✓
Multiple Language Capabilities	✓	✓
System Integration / IT Extended Services	✓	✓

Worldwide monitoring solutions for vehicles, personnel and assets

**SafeDispatch™**  
(Client-Hosted)



## Key Suites:



GPS Tracking



Voice Dispatch



Text Messaging



E-Mail



Telemetry/Alarms



Reports

- **FLEET ADMINISTRATION**

Efficiently manage fleet operations and remotely control radios. Get live status updates and configure the radio to send online/offline reports to the server.

- **EVENT LOGGING**

Log all system events including voice calls, text messages and status changes. Customize rules, filter and group events or generate reports detailing location and radio status.

- **VOICE DISPATCH**

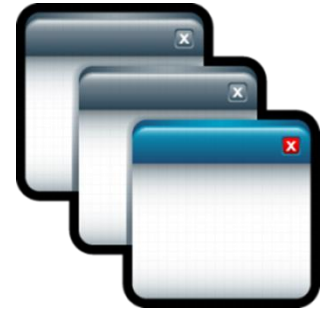
Provides communications between the dispatcher and remote radios. Make broadcast, group, private, remote monitor or emergency calls even quicker using programmable shortcuts.

- **TELEMETRY**

Monitor and manage remote equipment from the control room. The system supports native MOTOTRBO telemetry with multiple profiles supported for different devices.

- **ALARMS & LONE WORKER**

Improve the safety of personnel with automatic alarms and lone worker protection. The alarm can also be sent as an automated message, e-mail or SMS.



- **TEXT MESSAGES & EMAIL**  
Easily communicate with other devices when voice communication is not possible. Send broadcast, group or private text messages. Radio users can text back to the dispatcher.
- **VOICE RECORDING**  
Continuous voice recording of all calls with playback for analysis, reporting or training purposes. Audio files are stored in MP4 format on the Radio Server and Dispatcher.
- **GPS TRACKING**  
Follow workers, vehicles and business assets in real-time to ensure maximum safety and productivity. View routes, set up Geo-Fencing and log radio movements using a configurable set of rules
- **ENHANCED REPORTING**  
Manage your data and manage programs more effectively through daily recaps of events, calls, trips, recordings and more





# Voice Dispatch Features

## Voice Dispatch features include:

- Two-way private, group and all calls to and from dispatcher
- Caller identification
- Emergency alarms
- Subscriber remote voice monitoring
- Conference calls from dispatcher
- Intercom voice calls between dispatchers
- Call recording - in downloadable formats
- Lone Worker
- Radio check
- Call alert
- Radio kill



# SafeDispatch Voice Tab

Live | Geo-Fences and Landmarks | History | Reports | Text Messaging | **Voice Dispatch** | Telemetry | System

PTT All Settings

test2 | Status: ● PTT | Caller ID: | Patch

test1 | Status: ● PTT | Caller ID: | Patch

10.120.1.114 | 192.168.10.20 | Status: ● Channel | Channel Name | Zone | Zone Name | PTT | Caller ID: | Patch

127.0.0.1 | 192.168.10.90 | Status: ● Channel | Ch1 | Zone | Zone Name | PTT | Caller ID: | Patch

Radio | Recordings

Call Type: Private call made | Unit Name: 124 | Time From: 05/05/2014, 18:18 | To: 05/05/2014, 18:18 | Filter | Export Excel

Call Type	From	To	Start	Stop	Duration
	Private call made				
	Group call made				
	All call made				
	Private call received				
	Group call received				
	All call received				
	Demo101	ALL UNITS	8/8/2013 4:20:54 PM	8/8/2013 4:21:10 PM	16

127.0.0.1 | 192.168.10.80 | Status: ● Chan

127.0.0.1 | 192.168.10.40 | Status: ● Chan

127.0.0.1 | 192.168.10.60 | Status: ● Chan

127.0.0.1 | 192.168.10.160 | Status: ● Chan

## Voice Dispatch Tab Features:

- Voice Over IP Communications to Your Fleet
- Dispatcher to Dispatcher Communications
- Dispatcher to Radio Communications
- Record and Log All Dispatcher to Dispatcher and Dispatcher to Radio Communications (downloadable .wav files)
- Caller ID
- Group Call, Private Call and All Call
- Cross Patch for Communications on Multiple Channels

## GPS suite features include:

- **Real-time subscriber location tracking**
- **Google, Open Street, ESRI and custom maps supported**
- **Unit location logging**
- **Breadcrumb trail – historical playback of each unit  
(view multiple units at once)**
- **Geo-fencing and landmarks**
- **Alarm notifications per Geo-fence settings**
- **Automatic location reporting**
- **Location reporting per event**
- **Exportable reports**



SafeDispatch

Live | Geo-Fences and Landmarks | History | Reports | Text Messaging | Voice Dispatch | Telemetry | System

Unit list

Unit name	Status
<b>Housekeeping (3)</b>	
House 5	OFF
House 6	OFF
House 7	OFF
<b>Maintenance (3)</b>	
Main 10	OFF
Main 8	OFF
Main 9	OFF
<b>Security (3)</b>	
Security 2	GPS ON
Security 3	OFF
Security 4	OFF

Map

Lake Erie

Security 2

Type	Time
Emergency Alarm	05/25/2011 11:51:09
Emergency Alarm	05/25/2011 11:51:14
Emergency Alarm	05/25/2011 11:51:20
Send text message	05/25/2011 11:56:48
Recive text message	05/25/2011 11:57:25

Sound volume:  Call (PTT)

101

Type	Time	Description
Recive text message	11/15/2010 17:00:14	Returning to garage
Send text message	11/15/2010 17:00:37	Contact your supervi...
Recive text message	11/15/2010 17:02:40	What is your location

Sound volume:  Call (PTT)

## Live Tab Features and Functionalities:

- Live GPS Data
- Presence Notification
- Radio Enable and Disable
- Multiple Mapping Formats and Map Views Supported (Google, Microsoft MapPoint and ESRI)
- Unit List with PTT & Msg at a click
- Show and Hide Geo-Fences and Landmarks
- Alarm Notifications



# Text – Email Suite Features

## Text & Email Suite Features Include:

- **Data transmission**
- **Text message exchange**
  - **Deferred message scheduling**
- **Email gateway**
- **Telemetry alarm messages**
- **Event recording**
  - **Event alarms**
  - **Geofence alarms**
  - **Telemetry alarms**
- **E-mailable Voice Recordings – downloadable formats**

WHAT IS YOUR LOCATION?

ON MY WAY BACK TO THE OFFICE.

### Text & Email Messaging Tab Features:

- Multiple Inboxes and Outboxes for Individuals and Groups
- Recycle Bin
- Quickly Send Messages to Individual and Groups of Units
- Create Predefined Messages for Faster Messaging

From	Message	Date
173	A	May 4, 2011 - 16:07:41
173	Test	Apr 28, 2011 - 10:21:12
172	Pt	Apr 28, 2011 - 09:44:15
172	Gj	Apr 28, 2011 - 09:42:18
172	Ad	Apr 28, 2011 - 09:37:21
173	Confirming	Apr 11, 2011 - 10:41:24
172	Jg	Mar 16, 2011 - 17:08:31
172	Jga	Mar 16, 2011 - 16:50:06
170	Jg	Mar 9, 2011 - 12:24:12
173	Jg	Mar 9, 2011 - 11:12:39
173	Gj	Mar 8, 2011 - 14:25:39



# SafeDispatch 5.0 Enhancements

## System Monitoring

- Identify improper shut down of Mobile radios in vehicles.

## Geofencing

- More selections for alarms entry, exit , or entry and exit.
- Text Notification for entry/exit of geofence.
- Password protection of geofence areas prohibits modification.

## Reporting

- Report scheduling and email at prearranged time.
- Increase historical positions from a limit of 400 to 2000 positions.

## Email

- Added ability to email to a group call pool.



# SafeDispatch 5.0 Enhancements

## Voice Call Logs

- Added additional information for the call logs.
- Identify whether it was a *private*, *group* or *all-call*.
- Inserted *to* and *from* fields on sent and received calls.
- Added a duration field that shows the length of the call.
- Dispatcher can now export these call logs to Excel.
- Additional report filtering: by sent or received calls and also by type private, group, or all call

## Alarms

- Initiate an immediate location poll on emergency alarm.
- Dispatch map will center the screen on the emergency alarm.
- Also the icon of the alarmed unit will turn **RED** while the user name (listed on the left side of the screen) will go **BOLD** and **RED**.

## Your First Mobile Command & Control Center For Android Mobile Devices

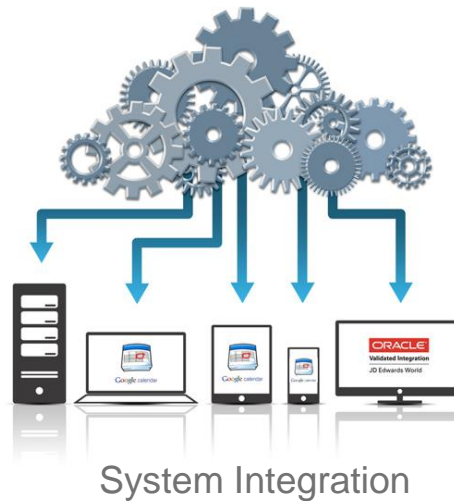
SafeDispatch Mobile™ is the new Android-based mobile application designed for use with SafeDispatch™ client-server solutions. The new mobile interface allows you to tap in from your mobile device to communicate over your radio network. Now, you can monitor your radio fleet from anywhere in the world!



**Watch Live Demo**

The logo for safemobile, featuring the word "safemobile" in a stylized, italicized font. The "o" in "mobile" is replaced by a blue sphere with a black orbital ring around it.

## Professional Services



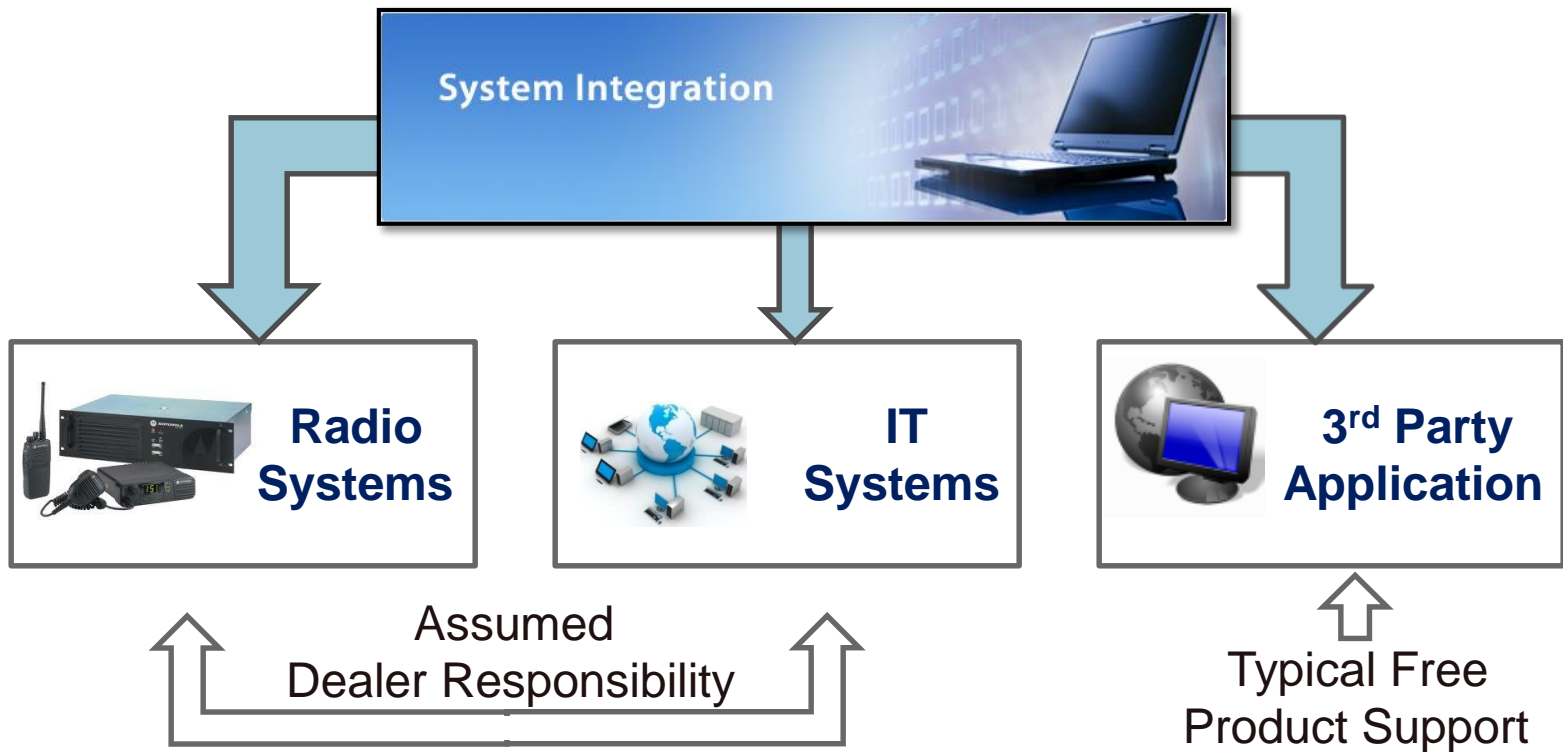
System Integration

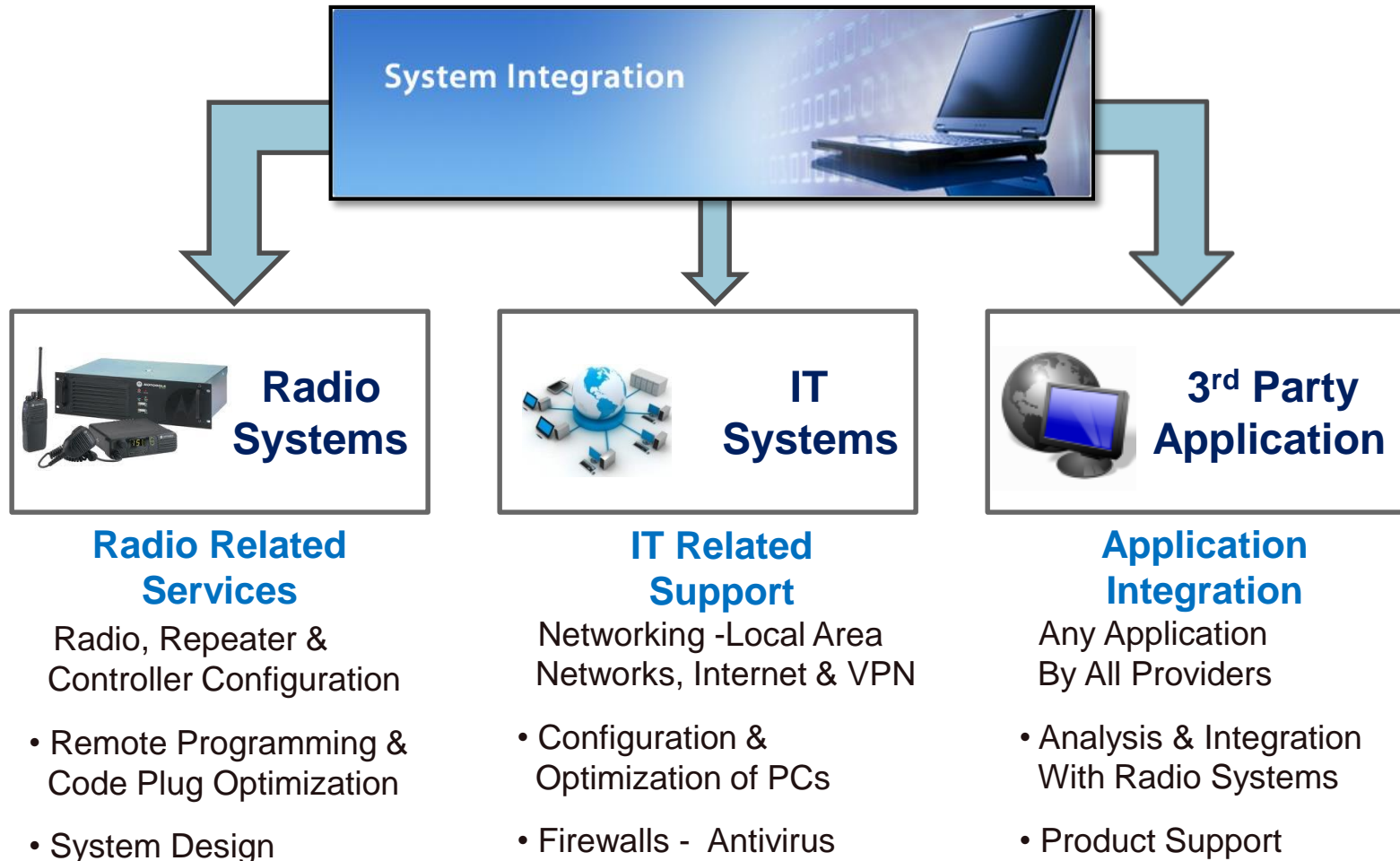


IT as a Service



## System Integration Services







# System Integration Services



**Remote Services**



**Onsite Services**

# SafeMobile Successes

## Important Customers:

- U.S. Army Corps of Engineers
- U.S. Department of Defense Education Activity
- United Nations and NATO forces
- Iraq, Afghanistan & Nigerian Governments
- BP, Chevron, Shell, Exxon, Gasprom, Lukoil, Romgas, Sonelgas, GASCO
- Public Transportation

## Public Safety

- Afghanistan
- Algeria
- Angola
- Bosnia
- Bulgaria
- Croatia
- Germany
- Greece
- Iraq
- Libya
- Morocco
- Nigeria
- Romania
- Russia
- Turkey
- Turkmenistan
- Tunisia

## Defense

- Bulgaria
- Croatia
- Czech Republic
- Pakistan
- Romania
- Russia
- Serbia
- Turkey

## Ministry of Health

- Greece
- Romania

Ministry of Finance  
Lybia

Ministry of Interior  
Lybia

Thank You!



## SafeMobile

3601 E. Algonquin Rd., #800

Rolling Meadows, IL 6008

Phone: (847) 818-1649

Web: [www.safemobile.com](http://www.safemobile.com)

E-mail: [sales@safemobile.com](mailto:sales@safemobile.com)

***safermobile***

**UNLEASH the POWER**

*of YOUR RADIOS with SafeMobile's*

***DATA APPLICATIONS!***

